

Hawthorne's Solutions to Stormwater Pollution

Easy Things You Can Do Every Day to Protect Our Water

As a Hawthorne resident or business owner, it is important to know these easy things you can do every day to protect our water.

Limit your use of fertilizers and pesticides

- Do a soil test to see if you need a fertilizer.
- Do not apply fertilizers if heavy rain is predicted.

Maintain a small lawn and keep the rest of your property or yard in a natural state with trees and other native vegetation that requires little or no fertilizer.

- If you use fertilizers and pesticides, follow the instructions on the label on how to correctly apply it.



- Look into alternatives for pesticides.





Make sure you properly store or discard any unused portions.

Properly use and dispose of hazardous products

- Hazardous products include some household or commercial cleaning products, lawn and garden care products, motor oil, antifreeze, and paints.
- Do not pour any hazardous products down a storm drain because storm drains are connected to local bodies of water. .

- If you have hazardous products in your home or workplace, make sure you store or dispose of them properly. Read the label for guidance.

- Call the Passaic County Office of Recycling & Resources at 973-



305-5738 for the dates and locations for disposal of hazardous-waste.

- Use natural or less toxic alternatives when possible.

- Recycle used motor oil at the Hawthorne Recycling Center.

Keep pollution out of storm drains

- Storm drains are marked connected to local bodies of water and marked as such.

Clean up after your pet

- The Borough of Hawthorne has enacted and will enforce local pet-waste rules as defined in Ordinance No. 1850-05

- The penalty for violation of the provisions of this Ordinance is a fine not to exceed \$100 for the first offense and \$200 for any subsequent offense.

P et owners or their keepers are required to pick up and properly dispose of pet waste dropped on public or other people's property.

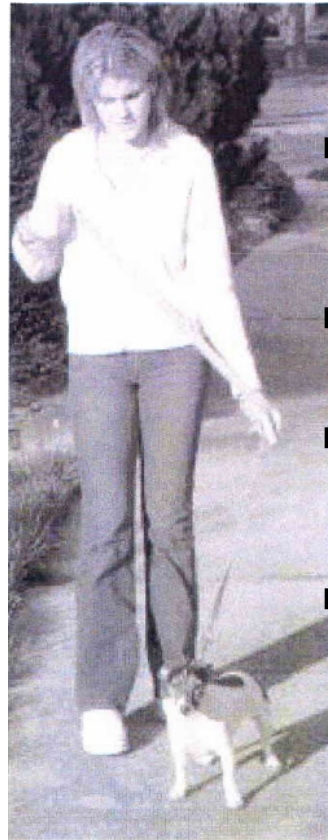
And remember to:

- . Use newspaper, bags or pooper-scoopers to pick up wastes.

- .Dispose of the wrapped pet waste in the trash or unwrapped in a toilet.

- .Never discard pet waste in a storm drain.

- Do not let sewage or other wastes flow into a stormwater system.



Don't litter

- Place litter in trash receptacles.

- Recycle. Recycle. Recycle.

- Participate in community cleanups.

Dispose of yard waste properly

- Keep leaves and grass out of storm drains.
- Follow yard waste collection rules.
- Use leaves and grass clippings as a resource for compost.
- Use a mulching mower that recycles grass clippings into the lawn.



**Don't feed
wildlife**

feeding of unconfined
wildlife in public parks.

■ Do not feed
wildlife, such as ducks
and geese, in public
areas.

■ Borough Ordinance
1862-05 prohibits the



www.cleanwaternj.org