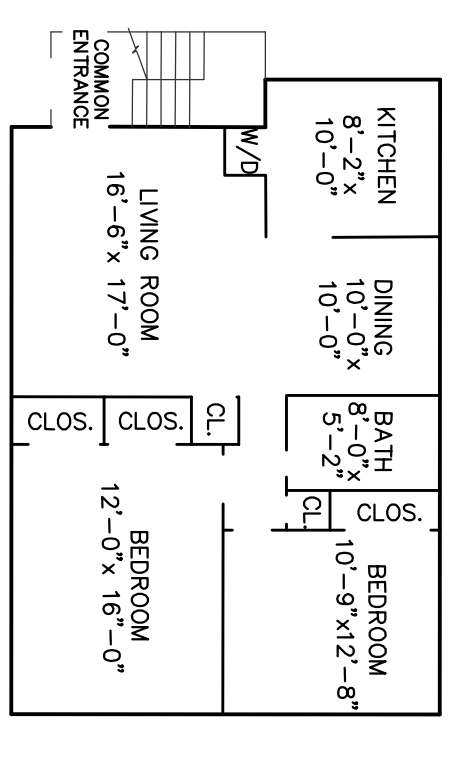
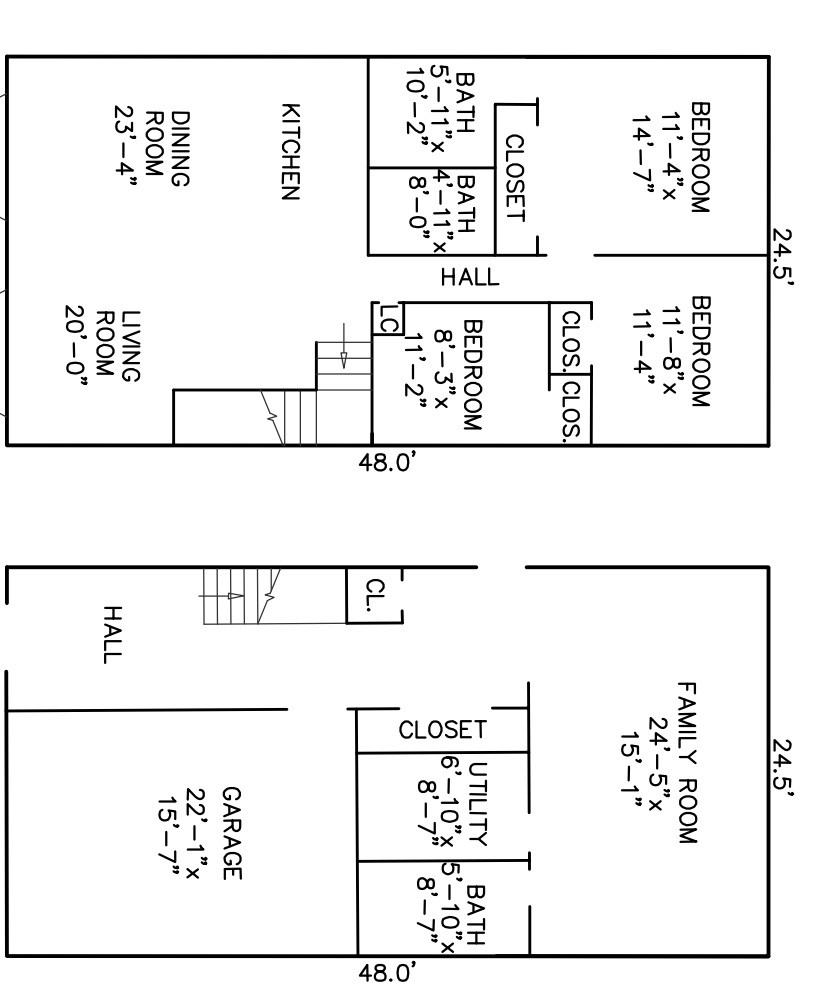


ONE BEDROOM UNIT
 UNITS # 3, 4, 11, 12, 15, 16, 19 & 20
 838 S.F.
 UNITS # 1, 2, 5, 6, 9, 10, 13, 14, 17 & 18
 ARE MIRROR IMAGES OF THIS PLAN.

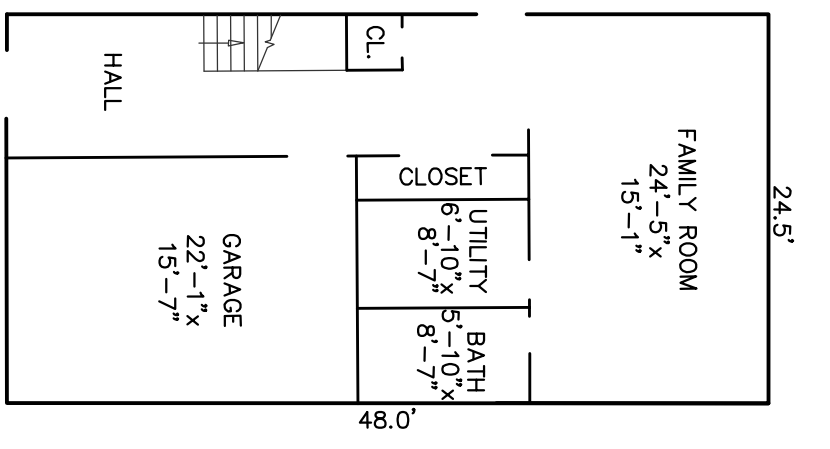


TWO BEDROOM UNIT
 UNITS # 7 & 8
 1023 S.F.

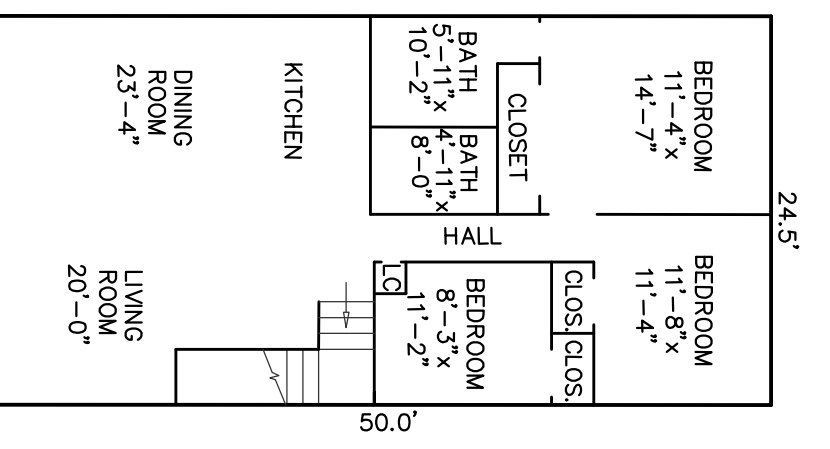
INSET "Q"
 20 UNITS TOTAL
 CENTINELA CONDOMINIUM
 164-168 DIAMOND BRIDGE AVENUE
 BLOCK 104 LOT 12
 TAX SHEET 9



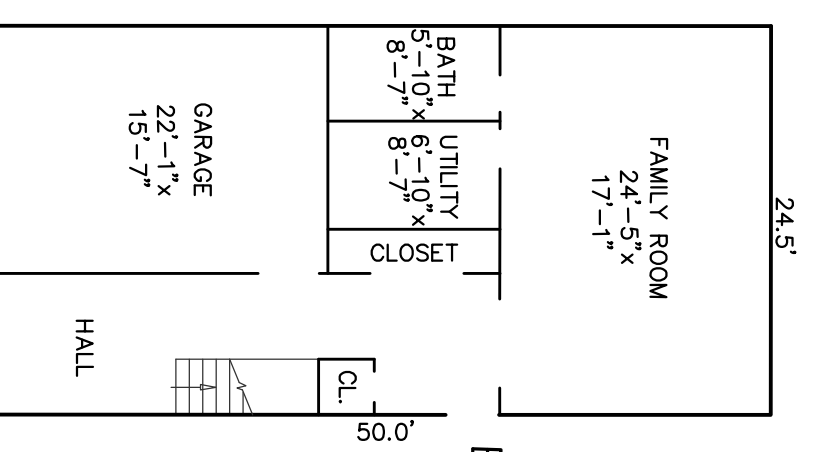
C0001
 FIRST FLOOR PLAN
 48 PARKER AVENUE
 1545 S.F.



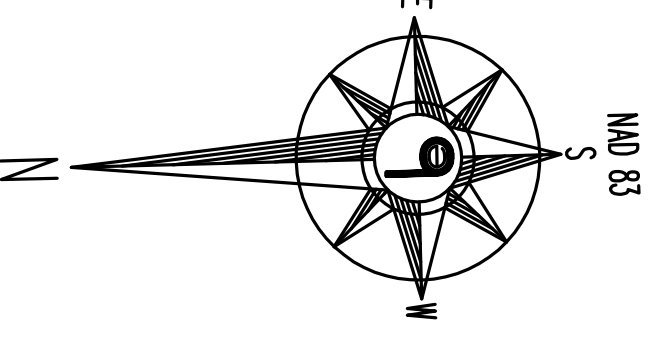
C0001
 BASEMENT PLAN



C0002
 FIRST FLOOR PLAN
 46 PARKER AVENUE
 1644 S.F.



C0002
 BASEMENT PLAN



INSET "R"
 2 UNITS TOTAL
 46-48 PARKER AVENUE CONDOMINIUM
 BLOCK 181 LOT 37
 TAX SHEET 14

THIS SHEET HAS BEEN DRAWN USING COMPUTER AIDED
 DRAFTING/DESIGN (CAD/D).

TAX MAP
 BOROUGH OF HAWTHORNE
 PASSAIC COUNTY, NEW JERSEY
 SCALE: 1"=200'
 APRIL, 2019
FRANK M. KRUPINSKI, P.L.S.
 BOSWELL McCLAVE ENGINEERING
 330 PHILLIPS AVENUE
 SOUTH HACKENSACK, N.J. 07606