

# HAWTHORNE GREEN TEAM

*Presents:*

“Learn About Lyme Disease”

Thursday, May 28, 2020 at 7:30 pm

Zoom Meeting ID: 769 2117 5619

Password: 1PDWYh

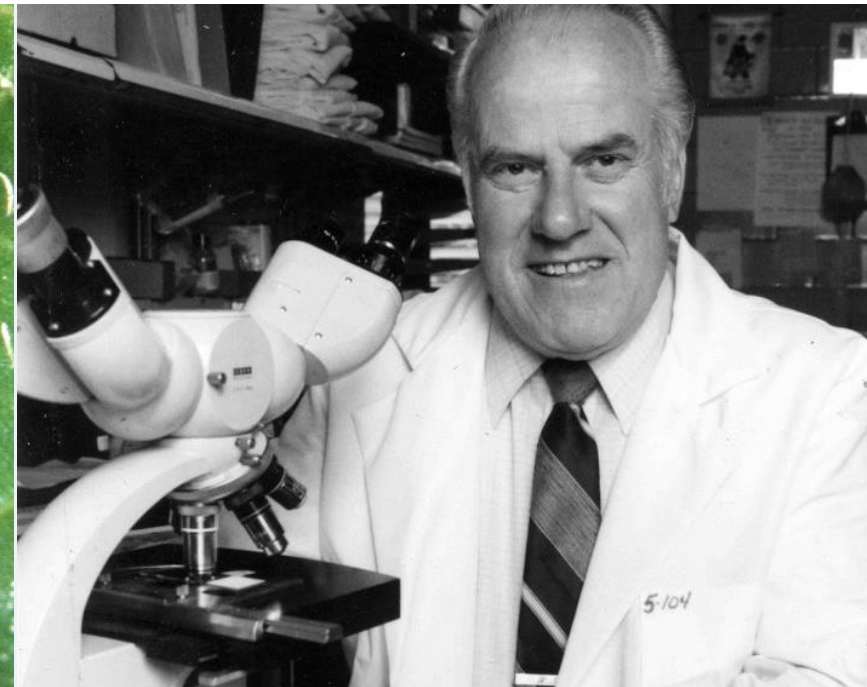
By Alexandra Soteriou

# LYME DISEASE

(please no "s" after lyme)

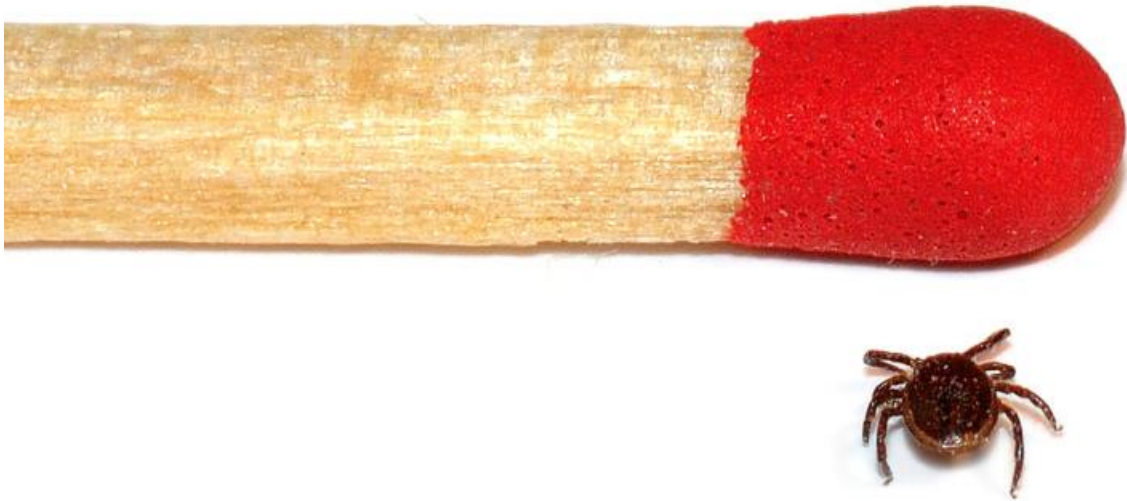
- Borrellia burgdorferi
- Borrellia miyamoyoi
- Borrelia heemsii
- Borrelia mayonii

Over 300 species of lyme world – wide about 50 in the USA



Lyme CT – identified by Willy Burgdorfer 1976 – yet lyme found in the iceman – present in forest 60,000 or more years

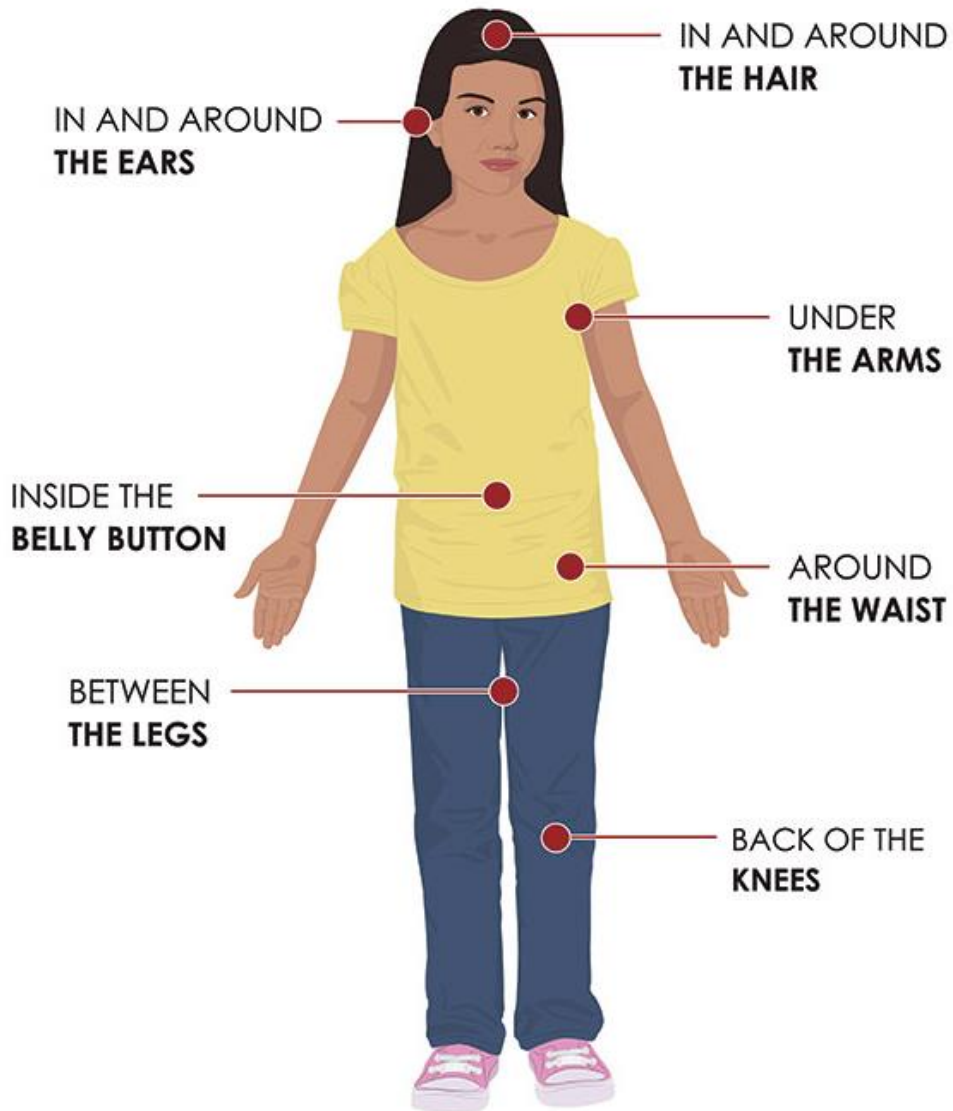
# CO-INFECTIONS



- Ehrlichia or Anaplasma
- Babesia
- Bartonella
- Mycoplasma
- Rickettsial infections – Rocky Mountain Spotted fever, Q fever
- STARI (Master's disease)
- Tularemia (from tick that fed on an infected rabbit)
- Brucellosis
- Powassan virus
- Heartland and Bourbon Virus
- New long-horned tick now in NJ from China – unknown infections

All this is not to scare you – but knowledge is power

# TRANSMISSION, REMOVAL, PREVENTION, MYTHS



Infection can be transmitted immediately – myth the tick has to be on for a length of time

Inspect body after being outdoors, wash clothes do not re-wear

Careful not to get tick saliva on hands when removing ticks from pets

Beware of other blood-sucking stinging insects – my story

CDC recommended tick repellants - [Environmental Protection Agency \(EPA\)-registered insect repellents External](#) containing DEET, picaridin, IR3535, Oil of Lemon Eucalyptus (OLE), para-menthane-diol (PMD), or 2-undecanone.

# SYMPTOMS & DANGERS



Bullseye rash – large number of individuals don't get it, nor did they remember seeing a tick – remember other stinging insects – photograph rash – sometimes the rash is diffuse

Stiff-neck, joint pain or swelling, migrating arthritis, brain fog, Bell's palsy – facial paralysis, chills, sweats and unexplained fevers, fatigue and tiredness, swollen glands, irritable bladder, upset stomach, change in bowel function, heart palpitations, heart block, muscle pain and cramps, twitching of face muscles, headaches, tingling numbness often in

extremities, burning stabbing sensations, eye pain & problems, ringing in ears, vertigo, motion sickness, panic attacks, light-headedness, tremors, confusion, difficulty thinking or concentrating, memory loss, disorientation, mood swings, irritability, depression disturbed sleep, psychotic changes

# TESTING

“The two-tiered protocol of using Lyme Elisa followed by a Western blot will miss the majority of Lyme patients” Horowitz.

Both are indirect tests as they measure the immune system’s response to an infectious agent – not the agent itself which is difficult to find in testing

My story of a negative test results and years of suffering

DNA tests, difficulty of getting a specimen in the sample, some tests based on individual immune response markers which vary greatly among individuals, many new species not covered by tests, organism hide in hard to access parts of the body like synovial fluid in the joints, the brain, heart muscle, etc,

Many test results are equivocal and equal to a coin toss... [igenex.com](http://igenex.com) among best labs for Lyme



# TREATMENT

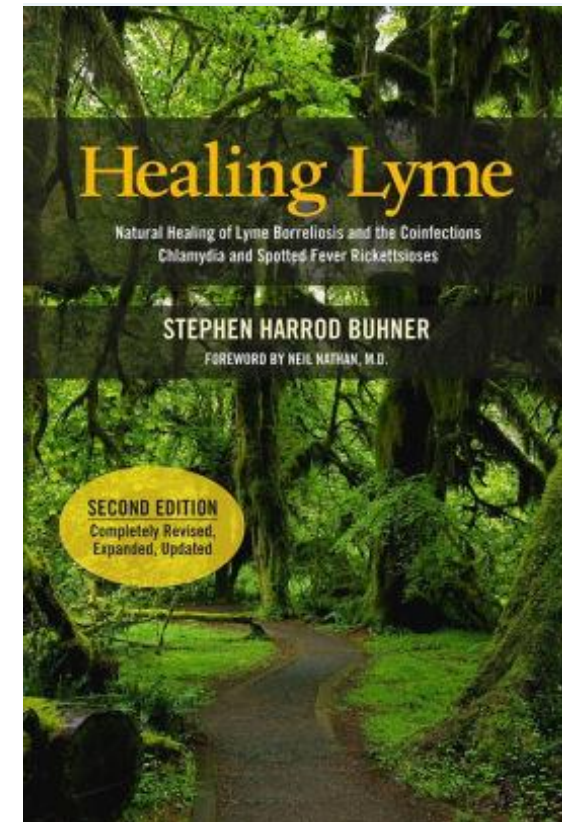
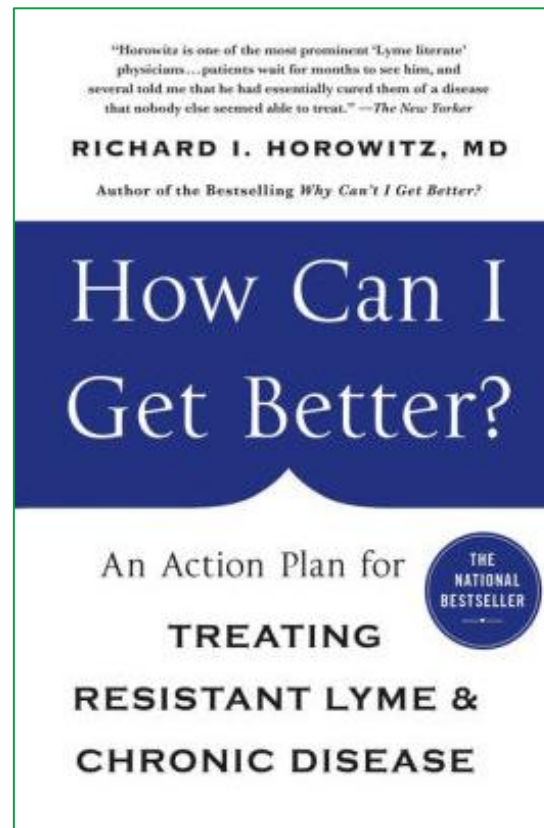
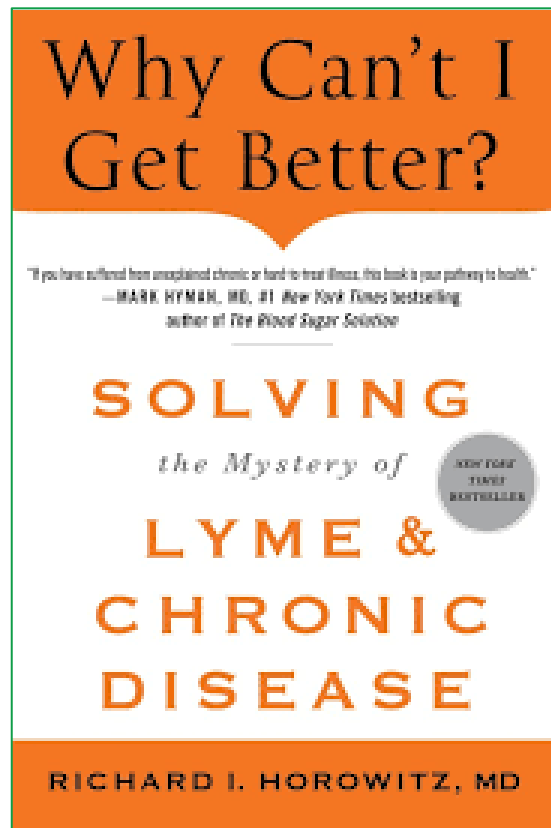
Difficulty of treatment – biofilms, spirochetal and round forms (formerly cystic forms) Antibiotics often fail to eradicate Lyme.

**Patients must work with Lyme-literate physicians,**

**There are no easy answers and there are many controversies over both testing and treatment**

# RESOURCES

ILADS - International Lyme and Associated Diseases Society [www.ilads.org](http://www.ilads.org)  
[Lymediseaseassociation.org](http://Lymediseaseassociation.org) <https://globallymealliance.org/>



Healing is a Journey  
that Makes us Stronger

